

**PLAN**  
**IW3 INTERCEPTOR**

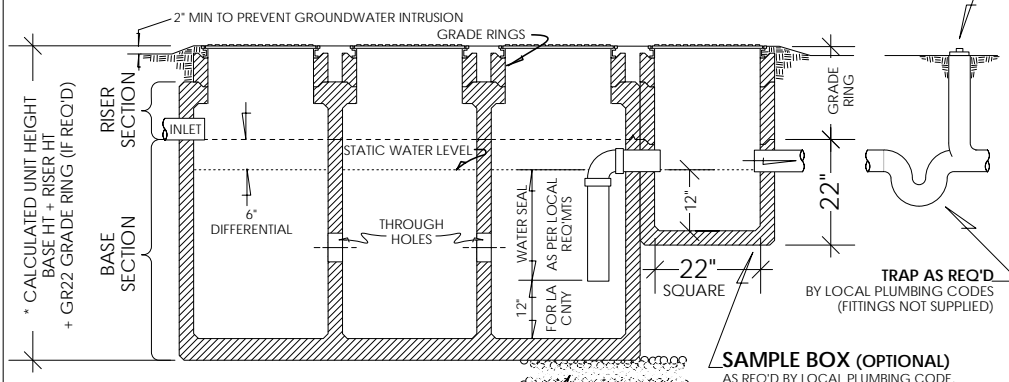
**SQUARE OPENINGS**  
STANDARD CONFIGURATION FOR 24" STEEL DIAMOND PLATE COVERS AND/OR GR22 GRADE RINGS. OPENINGS FOR CAST IRON OR OTHER SPECIAL SIZES OR TYPES OF COVERS CAN BE PROVIDED BY SPECIAL ORDER

**CONSTRUCTION NOTES**

1. PYRAMID PRECAST INDUSTRIAL WASTE ICLARIFIERS CONFORM TO LOS ANGELES COUNTY 1-2 PLAIN AND ARE DESIGNED TO INTERCEPT MAXIMUM LEVELS OF GREASE, SAND, CHEMICALS AND OTHER INDUSTRIAL WASTES BEFORE GENERAL PLANT WASTE IS INTRODUCED INTO THE SEWER SYSTEM.
2. INDUSTRIAL WASTE CLARIFIERS, RISER SECTIONS AND GR-22 GRADE RINGS ARE PRECAST CONCRETE POURED AND VIBRATED FOR DENSITY TO ACHIEVE 4000 PSI MINIMUM COMPRESSIVE STRENGTH @ 28 DAYS, AND REINFORCED WITH INTERMEDIATE OR HARD GRADE DEFORMED STEEL BARS CONFORMING TO ASTM SPEC A-615 \*\*\*\*\* ALL CONTINUOUS MONOLITHIC CONSTRUCTION.
3. INTERIOR OF CLARIFIER OF BARE CONCRETE.
4. UNLIMITED CAPACITIES AVAILABLE. FOR UNITS OF CAPACITIES BEYOND THOSE SHOWN HERE, CONTACT MANUFACTURER OR AGENT.
5. ENGINEERING DRAWINGS AVAILABLE ON REQUEST.

**INSTALLATION NOTES**

1. PRIOR TO INSTALLATION CONTACT THE LOCAL DEPARTMENT OF INDUSTRIAL WASTE AND/OR THE DEPARTMENT OF BUILDING AND SAFETY FOR CAPACITY AND/OR SPECIAL INSTALLATION REQUIREMENTS.
2. ALL SURFACE WATER MUST DRAIN AWAY FROM THE CLARIFIER TO EXCLUDE RAINFALL FROM THE SEWER SYSTEM. WHERE INSTALLATION IS TO BE IN A COVERED AREA SUCH AS INSIDE OF A BUILDING, THE COVERS MAY BE FLUSH WITH THE FLOOR PROVIDED THAT ALL WASTES ENTER THROUGH THE INLET LINE ONLY. FOR INTERIOR INSTALLATIONS, A GRATE MAY BE INSTALLED OVER THE INLET COMPARTMENT **ONLY WHERE PERMITTED**
3. THE STATIC WATER LEVEL SHALL NOT BE LOWER THAN 6' 0" BELOW THE GROUND LEVEL OR PAVEMENT.
4. INLET AND OUTLET CONNECTIONS FOR 4" DIAMETER CAST IRON PIPE STANDARD. ADJUSTMENTS MUST BE MADE FOR PIPE OF LARGER DIAMETER.
5. TRAFFIC LOCATION INSTALLATIONS WILL REQUIRE THE TOP OF THE CLARIFIER TO BE BELOW THE PAVEMENT. INSPECTION MANHOLES MUST BE BROUGHT TO GRADE WITH GR-22 GRADE RINGS.
6. EXCAVATION MUST BE TWO FOOT LARGER THAN UNIT SIZE, WHERE LENGTH INCLUDES SAMPLE BOX. DISTANCE FROM INLET INVERT TO FINAL GRADE MUST BE KNOWN AND DEPTH OF EXCAVATION SHALL SUIT "CALCULATED UNIT HEIGHT" (SEE SECTION VIEW)
7. EXCAVATION MUST BE LEVEL AND COMPACT. SIX INCHES OF ROADBASE OR GRAVEL RECOMMENDED UNDER UNIT TO DETER SETTILING.
8. STEEL DIAMOND PLATE COVERS AND FRAMES ARE BOLT-SECURED TYPE AND ARE SUITABLE FOR LIGHT TRAFFIC LOADS. FOR APPLICATIONS REQUIRING A WATER-TIGHT SEAL OR HEAVIER TRAFFIC, CAST IRON FRAMES AND COVERS RECOMMENDED.



**SECTION**

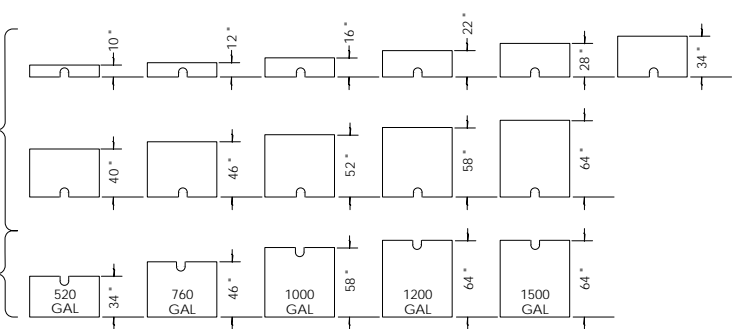
**CLEANOUT & VENT AS REQ'D**  
BY LOCAL PLUMBING CODES (FITTINGS NOT SUPPLIED)

**TRAP AS REQ'D**  
BY LOCAL PLUMBING CODES (FITTINGS NOT SUPPLIED)

**SAMPLE BOX (OPTIONAL)**  
AS REQ'D BY LOCAL PLUMBING CODE OF MONOLITHIC CONSTRUCTION AS SHOWN - BRING TO GRADE WITH GR-22 GRADE RINGS. BOX MAY BE USED AS A PUMP WELL, OR AS A RECEPTOR OR AS AN INSTRUMENT BOX AS WELL AS A SAMPLE BOX

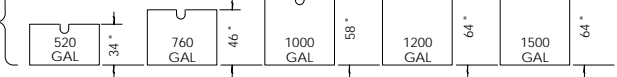
**IW3 RISER SECTION**

RISER SECTIONS ALLOW THE UNIT TO EXTEND CLOSER TO FINISH GRADE TO ALLOW EASIER ACCESS TO THE UNIT FOR SERVICING AND CLEANING. THEY ARE THE PREFERRED METHOD OF EXTENDING A UNIT TO GRADE AS RISER RINGS BECOME TOO RESTRICTIVE AND EXPENSIVE. CALCULATE THE DISTANCE FROM THE BOTTOM OF THE INLET LINE TO FINAL GRADE AND SUBTRACT 6" (FOR THE COVER AND A SHORT GR-22 GRADE RING) THEN SELECT A RISER SIZE WHICH IS LESS THAN THIS DIMENSION. THE DIFFERENCE WILL BE COMPENSATED WITH GR-22 RINGS.

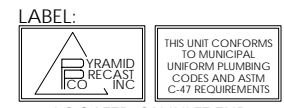


**IW3 BASE SECTION**

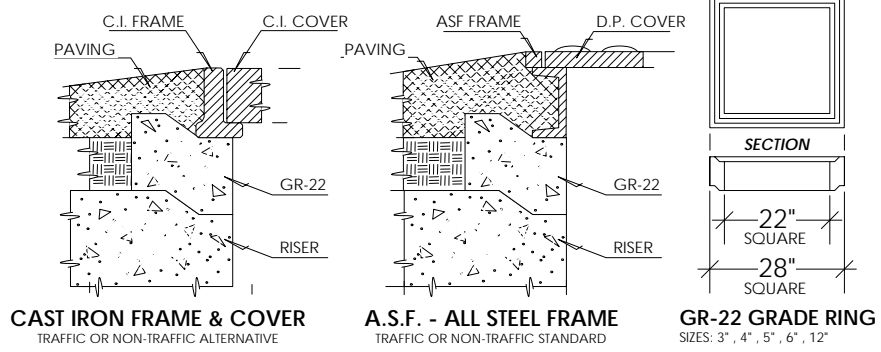
SELECT BASE SECTION ACCORDING TO REQUIRED CAPACITY



NOTE THAT ANY RISER SECTION CAN BE USED WITH ANY BASE SECTION



LOCATED ON INLET END UPPER LEFT HAND CORNER



**CAST IRON FRAME & COVER**  
TRAFFIC OR NON-TRAFFIC ALTERNATIVE

**A.S.F. - ALL STEEL FRAME**  
TRAFFIC OR NON-TRAFFIC STANDARD

**GR-22 GRADE RING**  
SIZES: 3", 4", 5", 6", 12"

**Industrial Waste Clarifier**  
**IW3 - 3 Compartment**  
**Assembly, Manholes & Notes**



- \* INDUSTRIAL WASTE CLARIFIERS
- \* SAND AND GREASE INTERCEPTORS
- \* SEPTIC TANKS & DISTRIBUTION BOXES

DRAWING #	PIW030002A
DRAWN BY	
SCALE	NONE